



Seaside, OR

7558

~ Rosenbauer Aerial ~

Customer: **Seaside, OR**

Truck job # **7558**

Product Description: **Rosenbauer Aerial**

Rosenbauer thanks you for your purchase of the subject fire apparatus from us. We are confident we will exceed your expectations when you receive the finished product and this apparatus will provide you years of reliable service.

This publication was designed to provide a visual update of your apparatus as it proceeds through the manufacturing process. The apparatus is being built to match the final specifications approved by the fire department. If you notice something in the photos that you feel do not match the specification please notify your dealer immediately. Although we do not encourage changes this late in the process, we will consider a change request but please understand delays in production may occur and change order fees may apply as well as actual costs to make any modifications.

We look forward to the opportunity when we can deliver the finished product to your fire department.

Truck Job#7558 VIN# 54F2EC603JWM12241



Copyright

All rights to this publication and their attachments are reserved by Rosenbauer America and Rosenbauer South Dakota, hereinafter referred to as Rosenbauer.

This document is for the personal use of the recipient only. No part of this document may be reproduced or transmitted in any form or by any means, electronic or mechanical, including photocopying and recording, or by any information storage or retrieval system, or translation into other languages, except as expressly permitted in writing by the publisher.

Information out of this publication may not be passed or made accessible to third persons, especially competitors.

Chassis 10-24-2018



Chassis 10-24-2018



Chassis 10-24-2018



Chassis 10-24-2018



Chassis 10-24-2018



Chassis 10-24-2018



Chassis 10-24-2018



Chassis 10-24-2018



Chassis 10-24-2018



Chassis 10-24-2018



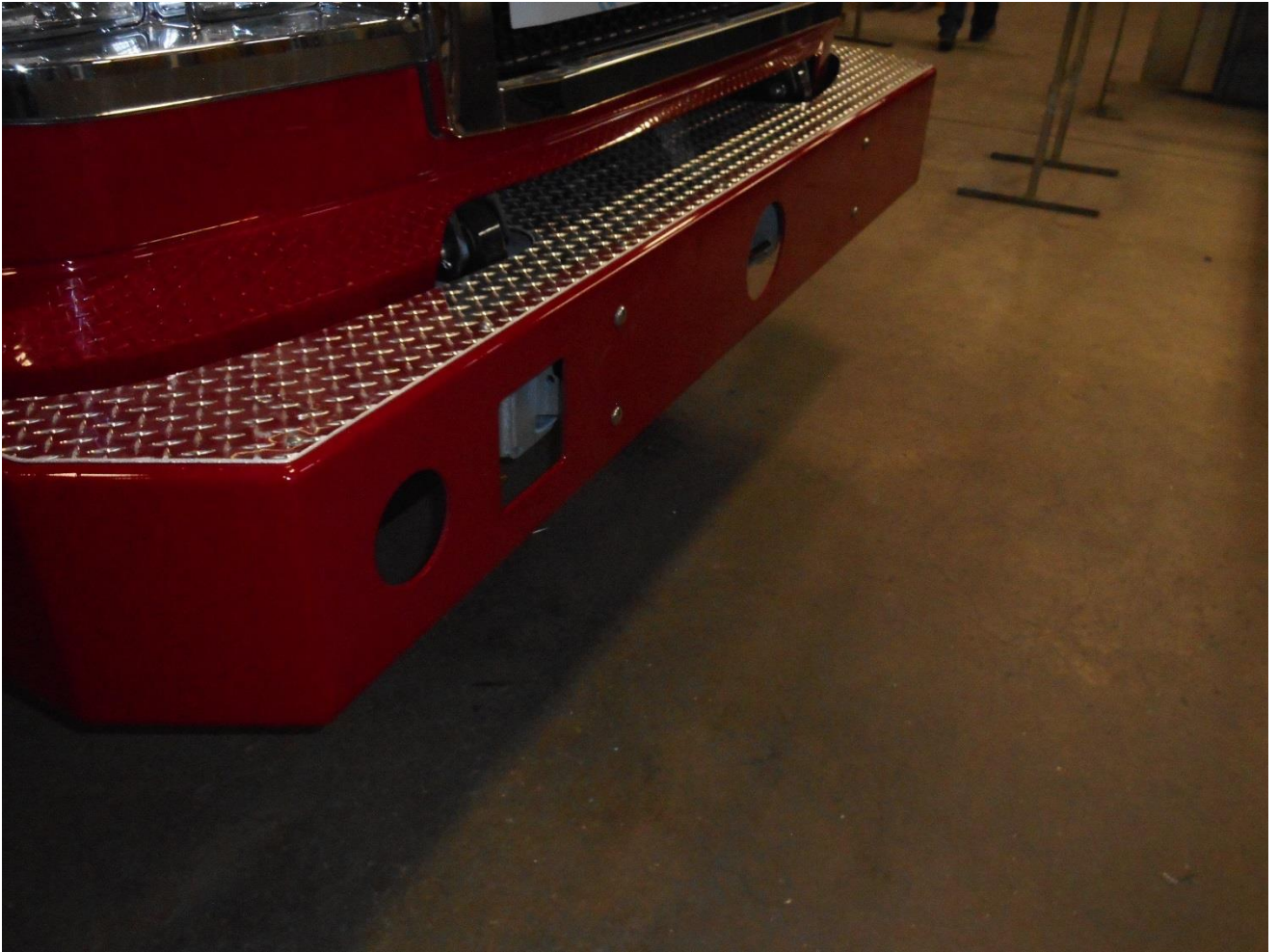
Bumper Installation 11-6-2018



Bumper Installation 11-6-2018



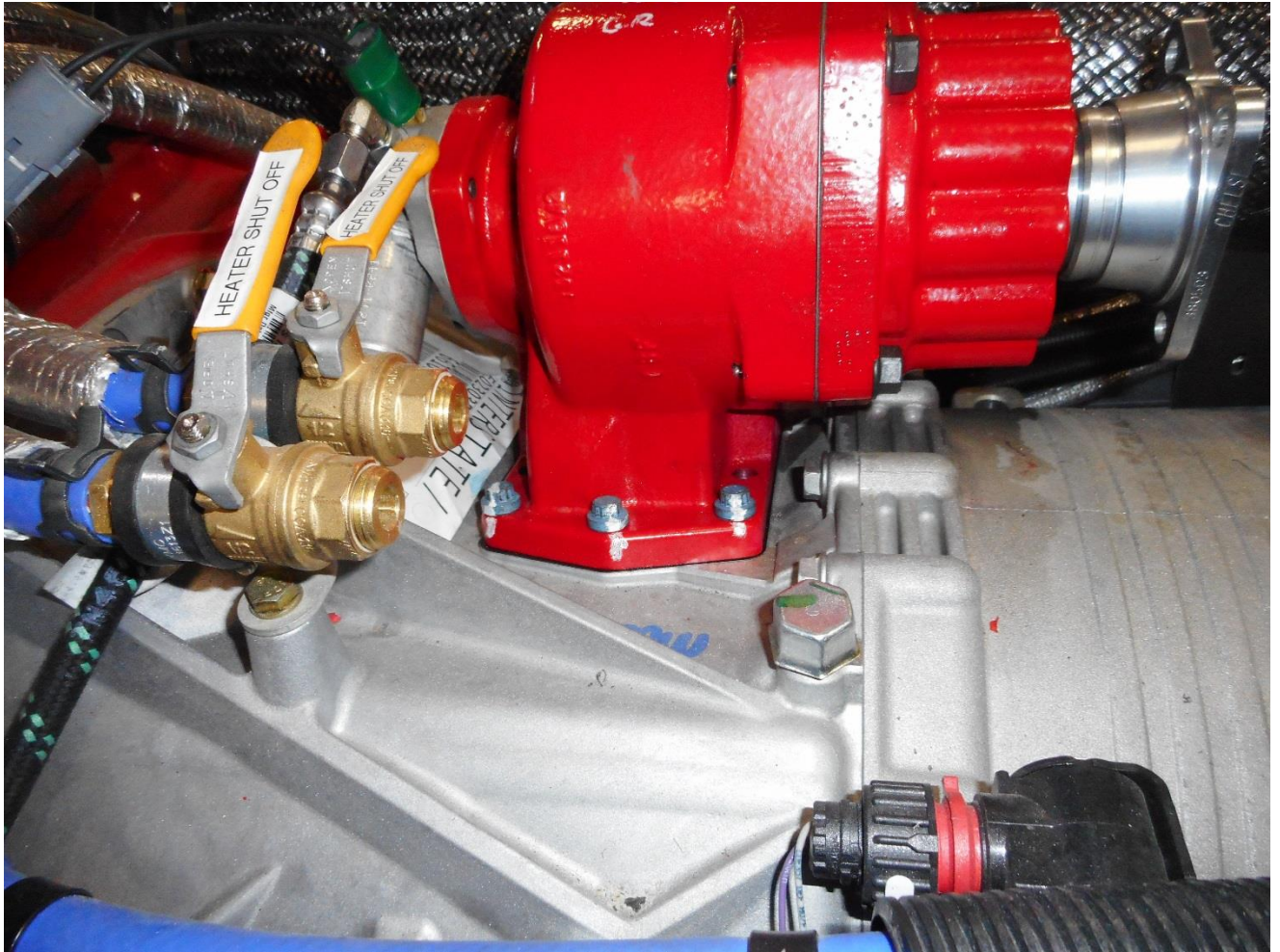
Bumper Installation 11-6-2018



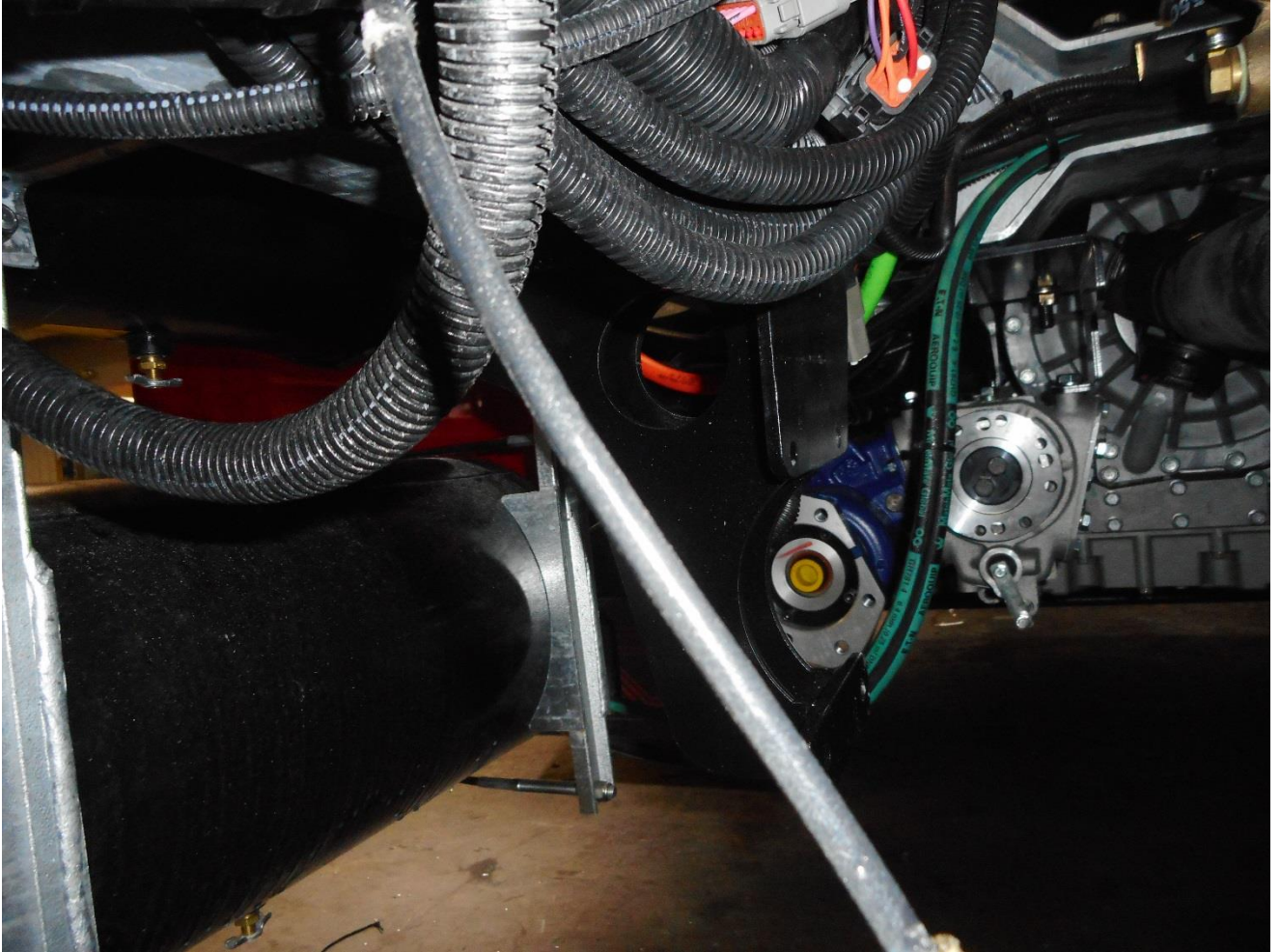
Pump Installation 11-7-2018



Pump Installation 11-7-2018



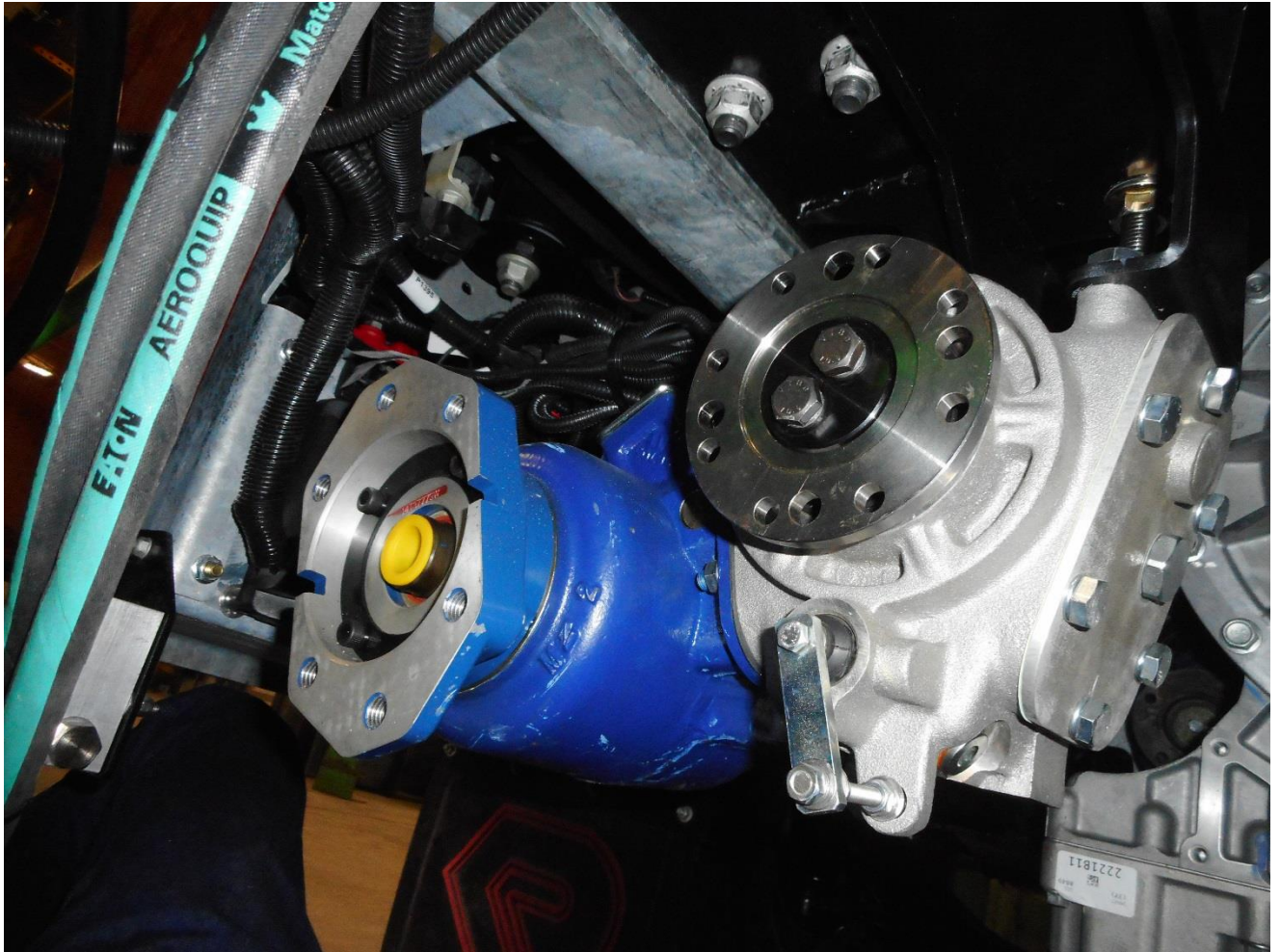
Pump Installation 11-7-2018



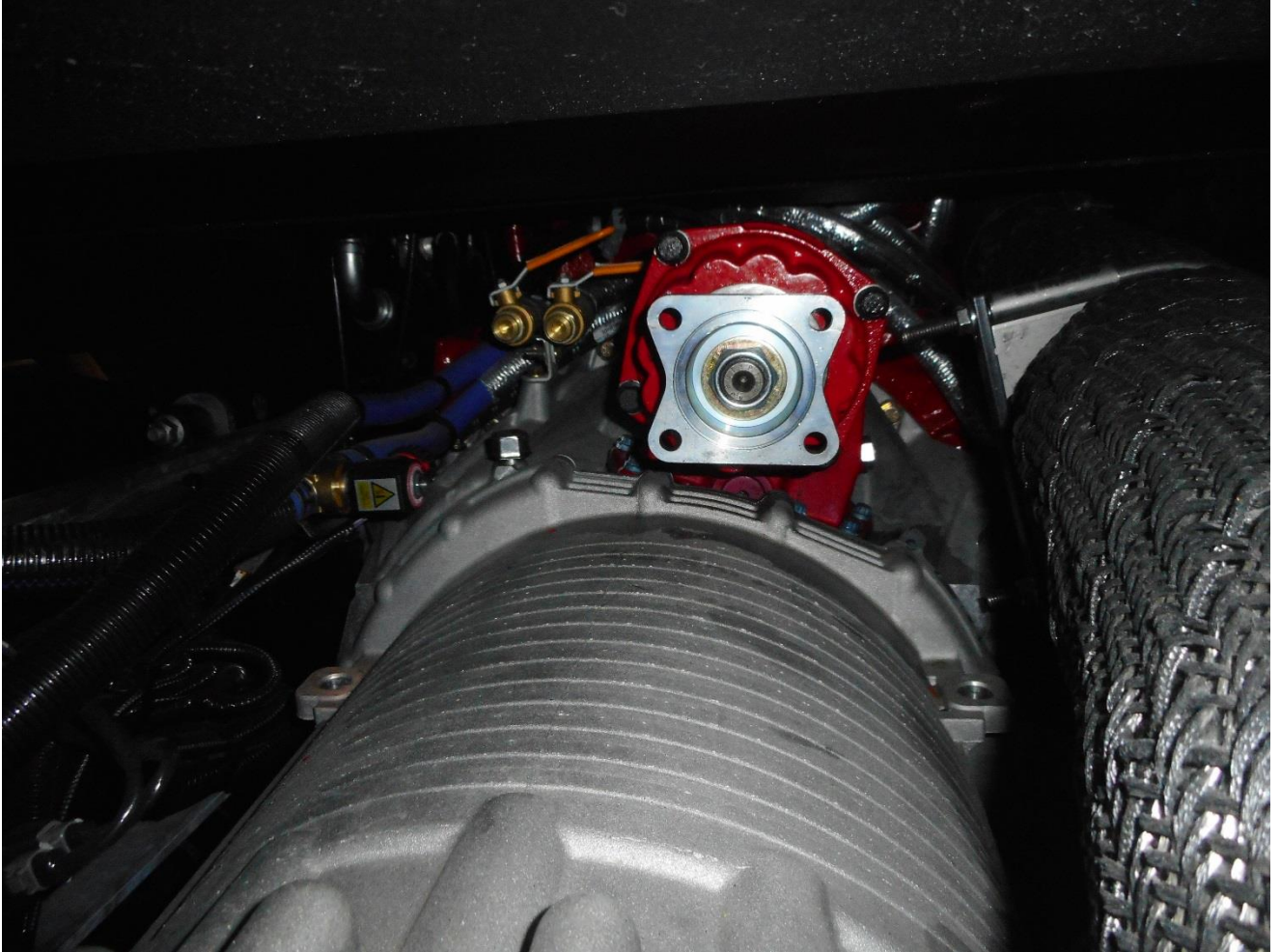
Pump Installation 11-7-2018



Pump Installation 11-7-2018



Pump Installation 11-7-2018



Aerial Arrival 2-22-2019



Aerial Arrival 2-22-2019



Aerial Arrival 2-22-2019



Aerial Arrival 2-22-2019



Chassis Electrical 4-26-2019



Chassis Electrical 4-26-2019



Chassis Electrical 4-26-2019



Chassis Electrical 4-26-2019



Chassis Electrical 4-26-2019



Chassis Electrical 4-26-2019



Chassis Electrical 4-26-2019



Chassis Electrical 4-26-2019



Chassis Electrical 4-26-2019



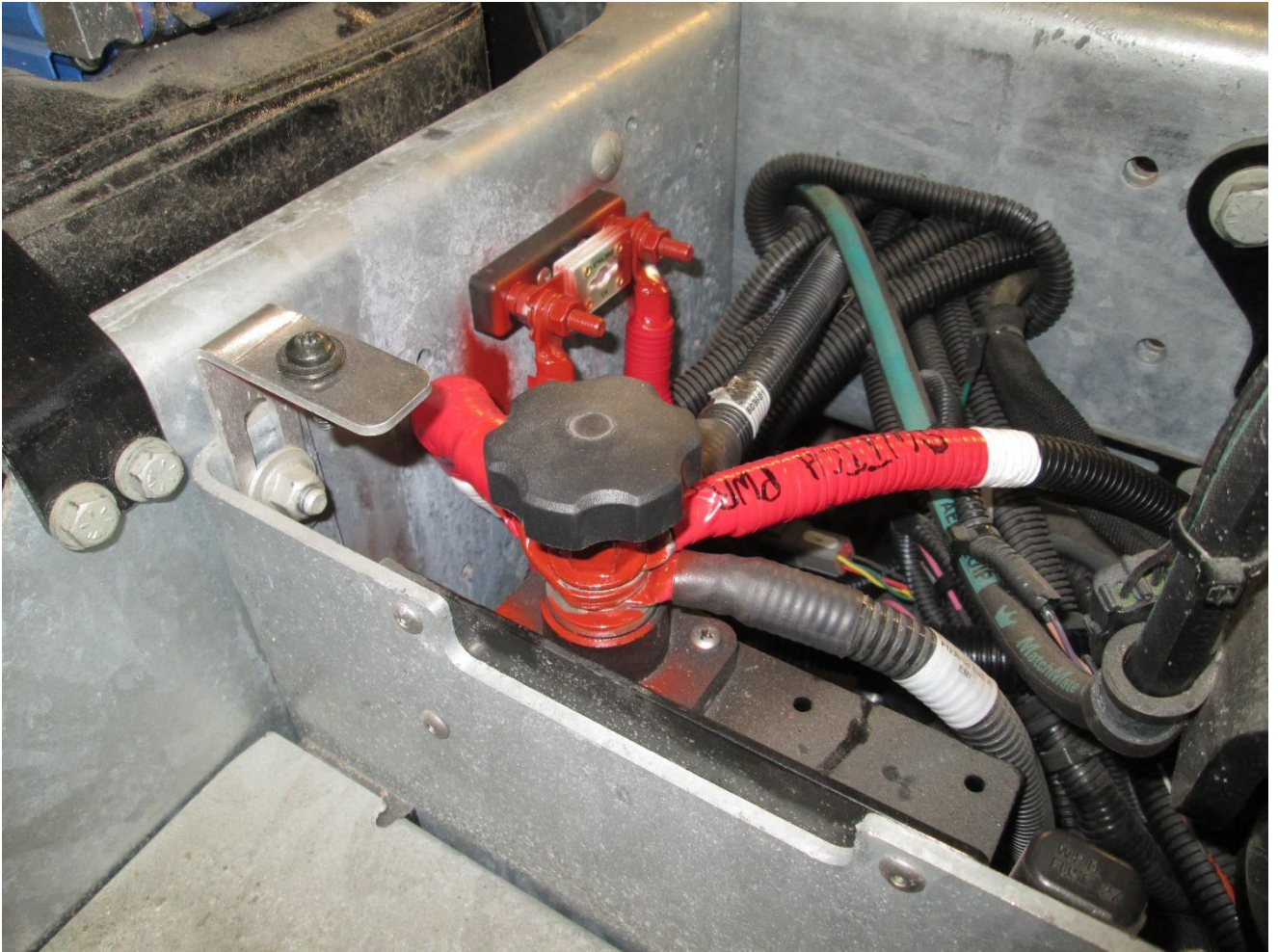
Chassis Electrical 4-26-2019



Chassis Electrical 4-26-2019



Chassis Electrical 4-26-2019



Chassis Electrical 4-26-2019



Chassis Electrical 4-26-2019



Chassis Electrical 4-26-2019



Chassis Electrical 4-26-2019



Chassis Electrical 4-26-2019



Body Installation 5-16-2019



Body Installation 5-16-2019



Body Installation 5-16-2019



Body Installation 5-16-2019



Body Installation 5-16-2019



Body Installation 5-16-2019



Body Installation 5-16-2019



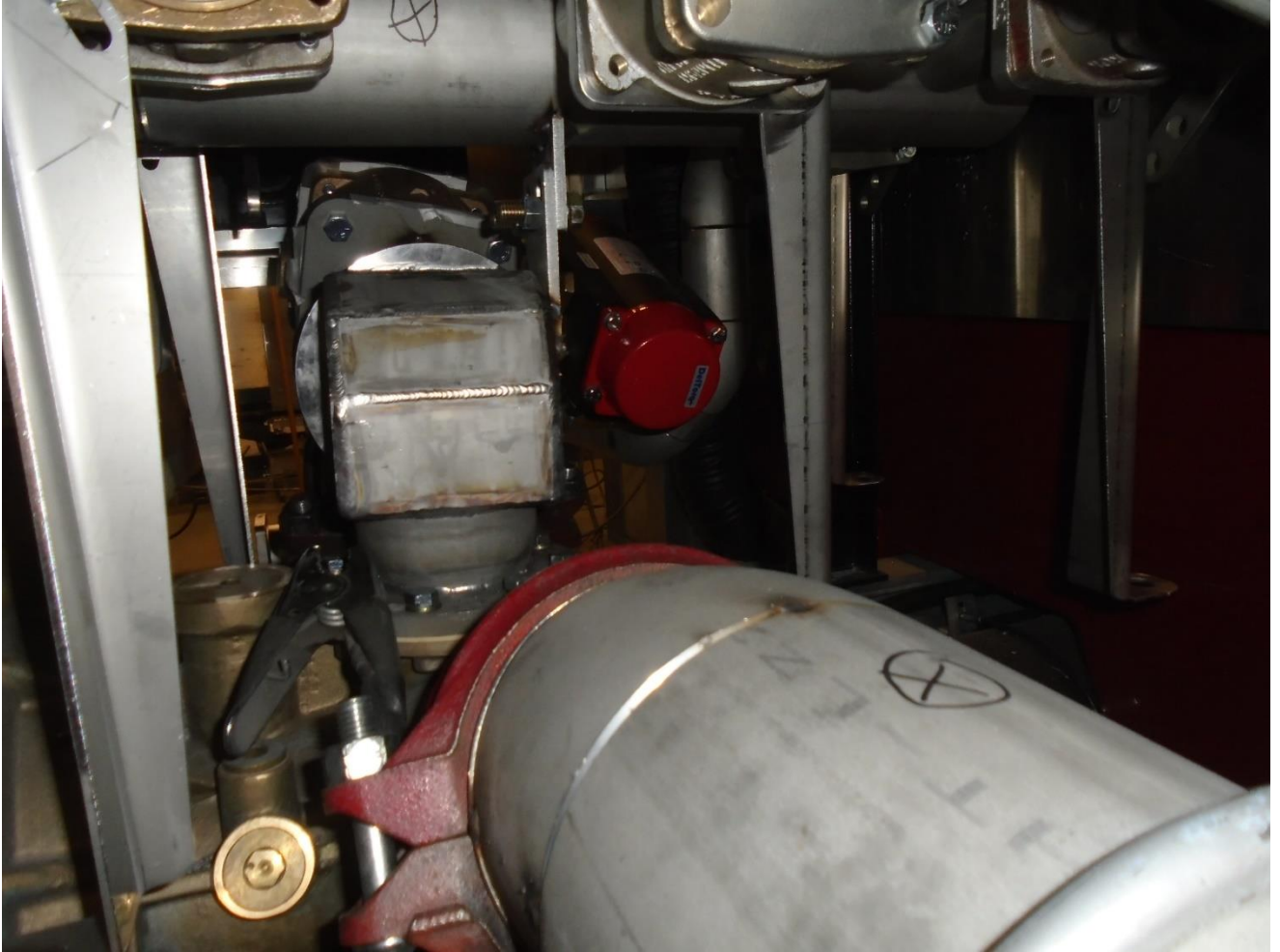
Plumbing 5-28-2019



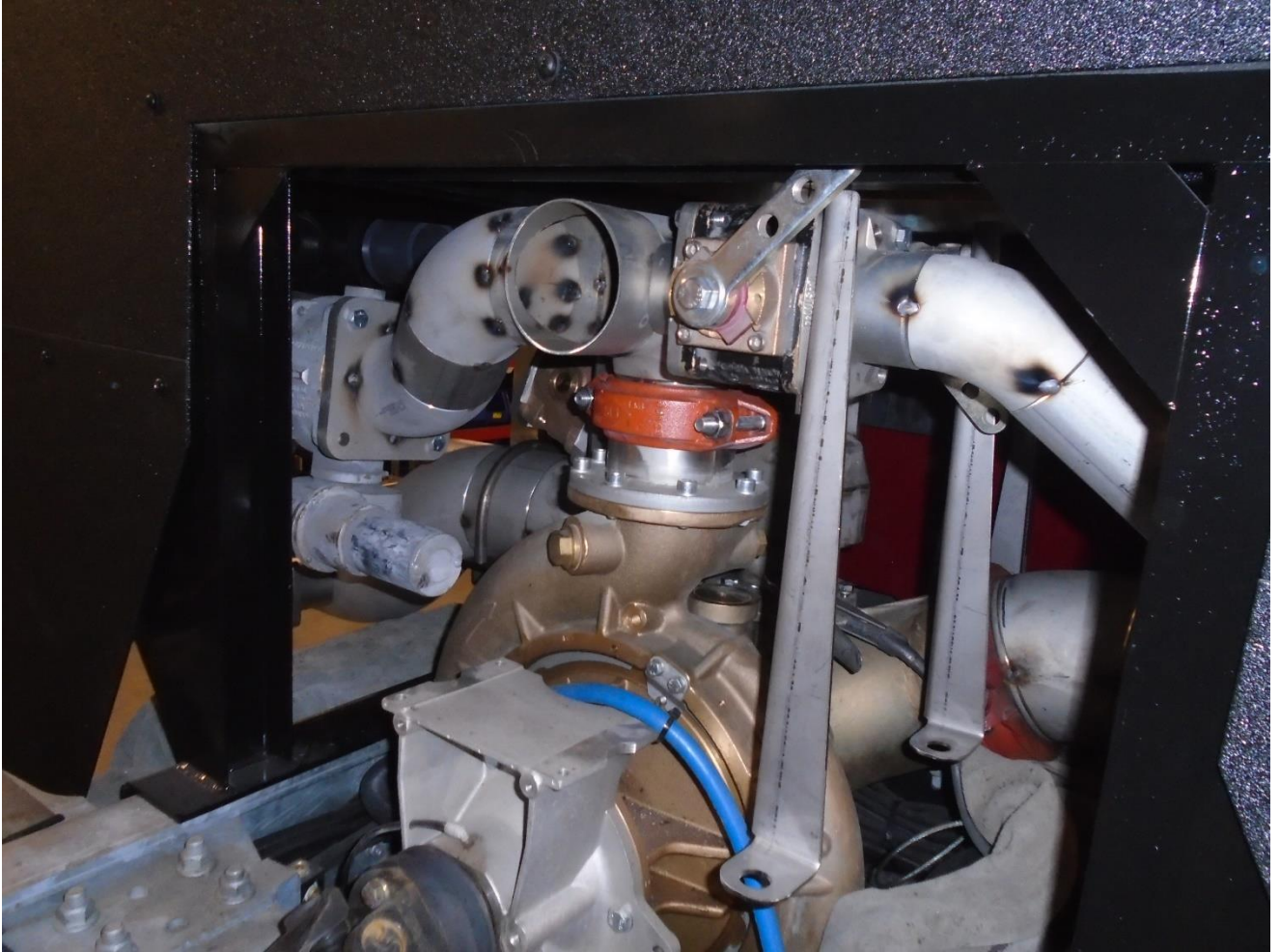
Plumbing 5-28-2019



Plumbing 5-28-2019



Plumbing 5-28-2019



Plumbing 5-28-2019



Plumbing 5-28-2019



Paint 8-13-2019



Paint 8-13-2019



Paint 8-13-2019



Paint 8-13-2019



Body Electrical 8-21-2019



Body Electrical 8-21-2019



Body Electrical 8-21-2019



Body Electrical 8-21-2019



Body Electrical 8-21-2019



Body Electrical 8-21-2019



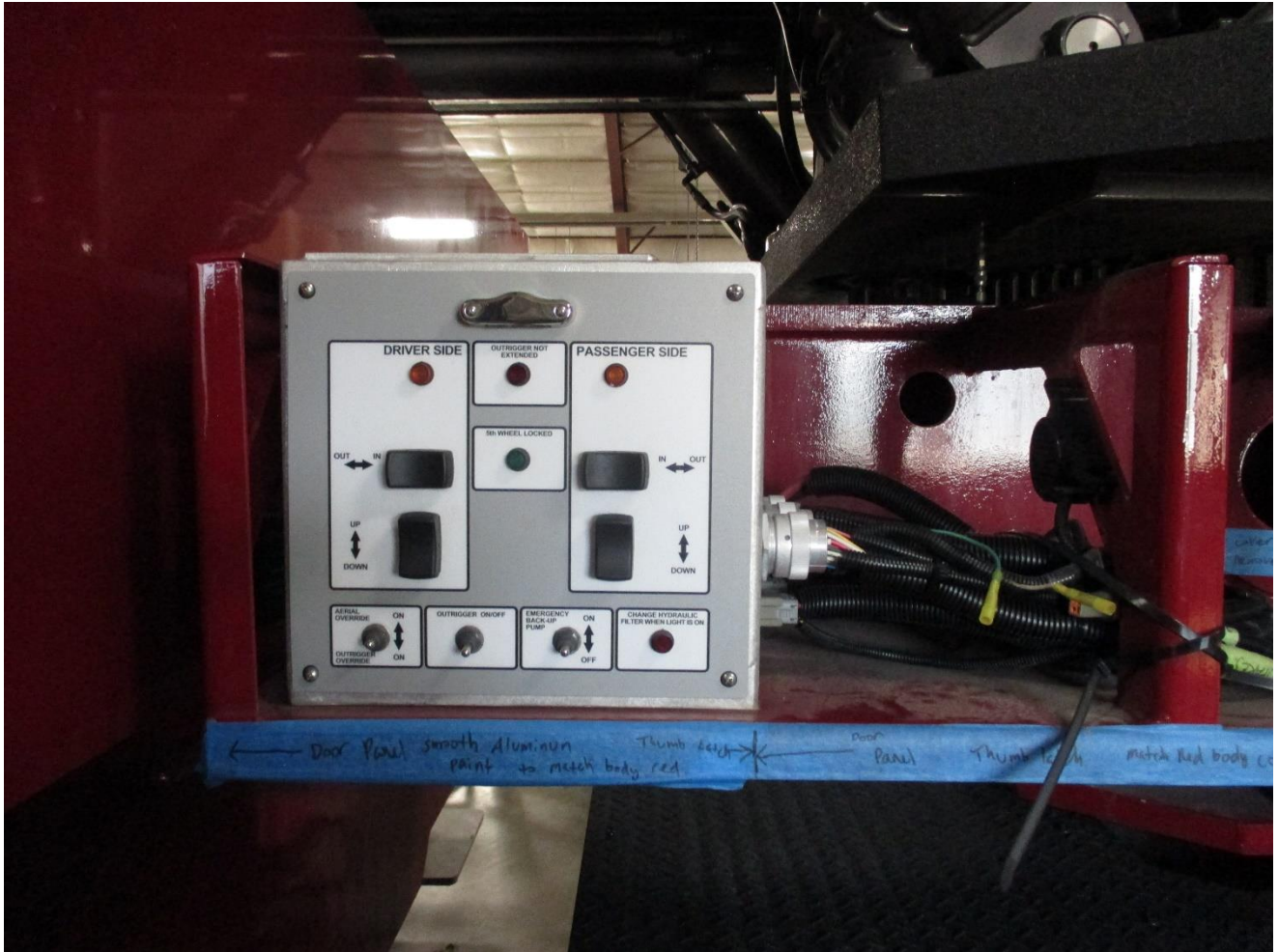
Body Electrical 8-21-2019



Body Electrical 8-21-2019



Body Electrical 8-21-2019



Body Electrical 8-21-2019



Body Electrical 8-21-2019



Body Electrical 8-21-2019



Body Electrical 8-21-2019



Body Electrical 8-21-2019

